

KAZDĘBIE – production and services area

Area: 10,3523ha divided into 3 smaller plots.

Owner: District of Dąbrowa Górnicza

Description: Undeveloped property, situated in the borders of Katowice Special Economic Zone, Sosnowiec – Dąbrowa Subzone. The industrial plants nearby. This is a flat area of polygon shape, covered with single growing self-sown bushes. Property situated at the road No. 790, in the distance of approx. 500 m, possesses an entry to the national No. 94 road Kraków – Wrocław.

Utilities: Basic appliances of technical infrastructure nearby.

Valid Local Master Plan: production and services area.

City Dąbrowa Górnicza

- A member of the SILESIA Metropolis, the biggest conglomeration in this part of Europe, 1218 sq km is inhabited by 2 million people.
- The city is conveniently located 20 km from Katowice Airport and 70 km from Kraków - Balice Airport.
- It offers plenty of attractive land for development with lots ranging from 0,5 to 259 hectares for production, services, housing and hotel development.
- More investment offers dabrowa-gornicza.com
- More than 187 ha of the city areas lie within the Katowice Special Economic Zone, the most effective zone in Poland.
- New investors are eligible for real estate tax breaks.
- A total of 135 foreign companies have already invested here.

Join them

**City Development and Investor's Assistance Office in Dąbrowa Górnicza,
21 Graniczna St, Poland**

Ewa Fudali-Bondel, tel.: + 48 32 295 96 97, email: efudali@idabrowa.pl

Karolina Karlik, tel.: +48 32 295 96 86, email: kkarlik@idabrowa.pl



**REGIONAL
PROGRAMME**
NATIONAL COHESION STRATEGY



Silesia.
Positive energy

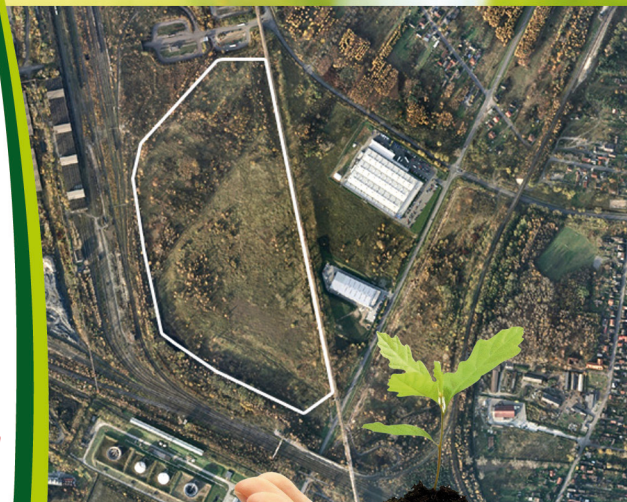


EUROPEAN UNION
EUROPEAN REGIONAL
DEVELOPMENT FUND



„The project co-financed by the European Union from the European Regional Development Fund within the framework of the Regional Operational Programme of the Silesia Voivodeship for the years 2007-2013”

**INVEST
IN DĄBROWA
GÓRNICZA**



*Intensive
growth
area*